



## **CMC Project Management Experience**

**Combined Management Consultants (CMC) is a quality independent ERP, Project Management, Business and IT Consulting organisation.**

CMC has over 29 years experience in providing Strategic ERP Consulting and Project Management Services to over 100 organisations across a range of industries including Distribution, Manufacturing, Warehouse Management, Supply Chain, Retail, Telecommunications, Finance and Government.

Having helped determine the needs of our clients, the goal of each and every member of our team of strategic consultants, project managers and systems professionals, is to deliver results and complete projects on time and on budget. The consistent achievement of this objective has made us a valued partner to our clients as well as leading IT and Professional Services organisations.

### ***High Value Professional Services***

The foundation of our portfolio of skills is Strategic Consulting and Project Management expertise. We specialise in:

- **Strategic ERP Planning and Advice**
- **Program and Project Management**
- **Business Process Analysis and Requirements Definition**
- **Vendor and System Evaluation and Selection**
- **Tender Management and Vendor Facilitation**
- **Change Management, Transition and Training**
- **Test Management and Testing Methodology**
- **Quality Assurance Reviews**
- **Independent Steering Committee Representation**
- **Business Case Development**
- **Supply Chain and Distribution Consulting**
- **Networks and Infrastructure**

### ***Project Management Excellence***

CMC was originally established to address a growing need for the delivery of professional Project Management services in specific industries. Once established, demand grew and additional professional project managers and industry consultants started joining our organisation.

For the past 29 years, CMC has been the provider of Project Managers and Project Directors to organisations such as IBM GSA, Oracle, KPMG, Ernst & Young,

*"We engaged CMC to help us with our complex ERP rollout. CMC's Program Manager was instrumental in developing our overarching plan and then pushing our management team to execute this with the necessary resource commitment. We also engaged a CMC Project Manager to sort out an existing business-critical installation and many of the interrelated and outstanding business issues. This was done highly effectively and without fuss. Both of these engagements have successfully contributed to growing my team's Project Management and ERP system capability".*

**Trevor O'Neil**  
**Chief Information Officer**  
**Sandvik Mining and Construction**

Deloitte Consulting, EDS / AT Kearney, Supply Chain Consulting (now Fujitsu), Acumen Alliance (now Oakton) and others. These firms have drawn on resources from CMC where there has been a need to have deep industry experience, appropriate Project Management Methodologies and skills transfer to in house team members.

On a number of occasions, CMC Consultants have been requested to establish Project Office environments and to recommend and deploy project management methodologies and frameworks for organisations such as Sandvik Mining and Construction, Telstra Payphones, Health Insurance Commission and HIH Winterthur.



We are recognised as having the specialist skills necessary to deploy appropriate levels of standardisation and methodology to the level necessary to ensure maximum utility and security for the resulting environments.

Our Project Managers have specialist capabilities in the following areas:

- ✓ **Strategic Consulting**
- ✓ **Enterprise Applications (ERP)**
- ✓ **Custom Developments**
- ✓ **eCommerce Environments**
- ✓ **System Integration**
- ✓ **Test Management**
- ✓ **Infrastructure Rollouts**

CMC utilises an internal QA Review process for all our client engagements from Project Feasibility Assessment through to Post Implementation Review. In addition, a number of CMC directors and consultants have experience in ITIL Service Delivery framework implementation and have provided consulting services in this area to both private and public sector organisations.

### ***Project Management Methodology***

CMC utilises APT System's Project Lifecycle Methodology ([www.apt-systems.com](http://www.apt-systems.com)) for our projects where the client has no preferred methodology.

The project management methodology within APT is fully aligned to the Project Management Institute's® Project Management Body of Knowledge (PMBok®), recognized as worlds best practice in Project Management. The project management component of the APT Methodology commences with the business case or feasibility study and proceeds through the planning, execution and closing of projects.

The APT methodology has been designed to comply with the requirements of the international ISO 9000 Quality Management standard.

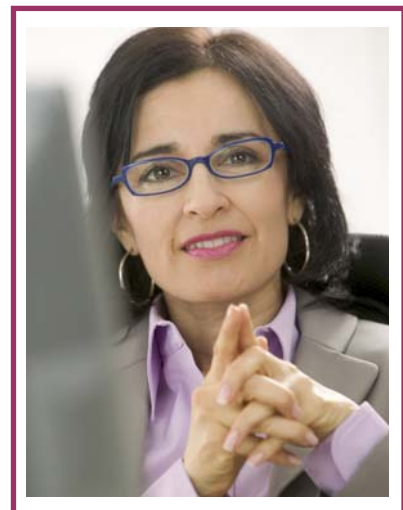
APT reduces the risk for projects by introducing a stable and structured environment. Start-up times are reduced dramatically by decreasing the learning curve for project initiation and planning and by providing instant access to project structure and template documents.

The APT Methodology defines the approach required to

complete specific tasks, so that the required level of quality and efficiency is achieved. The APT Methodology is both practical and easy to use. It provides:

- ✓ **An industry standard approach to Project Management.**
- ✓ **An up-to-date guide to major areas of the systems delivery lifecycle.**
- ✓ **A defined and consistent approach to each activity and task.**
- ✓ **Associated guidelines and standards.**
- ✓ **An adaptable approach that supports your systems developers in the use of appropriate techniques, depending on the size and nature of the project.**
- ✓ **Effective management of project resources - with clear task lists and an understanding of what needs to be done.**
- ✓ **Control over quality - being designed into the system from the outset.**
- ✓ **Proper documentation.**

It should be noted that in-house mentoring in the use of the APT Methodology and its application to our client's projects is offered to all CMC personnel. A number of our consultants are engaged in situations where the client organisation has specific methodology requirements. In these cases, the client's methodology takes precedence over the APT Methodology.





### **CMC's Corporate Philosophy**

CMC has a strong commitment to producing quality, timely deliverables and to ensuring that experience gained during project life cycles is transferred to our client's personnel. Where possible, we recommend that your staff work alongside CMC's project team to ensure that expertise gained is retained within your organisation and project goals, business outcomes and self sufficiency are realised at the earliest opportunity.

### **Clients**

Our clients are leading names across the spectrum of industry, commerce and the public sector. CMC is able to demonstrate a successful track record with all our clients. Our independence and unique set of capabilities makes us an ideal choice as a long-term business partner.

Following is a list of some of our Project Management clients:

- AAMI
- AAPT
- Agfa-Gevaert
- Aluminium Specialties Group (ALSPEC)
- Association of Independent Schools NSW
- Australian Computer Society
- Blackmores
- Bradnam Group
- Bush's Pet Foods
- Caltex
- Cantarella Bros
- Cerner
- Dairy Farmers
- David Brown Gear Industries
- Downer EDI Mining
- Eastern Portable Buildings
- Environmental Protection Authority(EPA)
- Faber-Castell
- Fantastic Holdings
- Ferrier Hodgson
- Gazal Apparel
- G. James Australia
- GraysOnline
- Hardex / Mitre 10
- Health Insurance Commission
- Hutchison Telecoms
- IBM GSA
- ING Administration
- Macquarie Bank
- Manassen Foods
- Meat and Livestock Australia
- Metcash
- NSW Health – Peak Purchasing Council
- NSW Department of Housing
- OPSM Group
- Optus Satellite
- Oracle Australia
- Pacific National
- Plastral
- Poulos Bros
- Queensland Energy Resources (QER)
- Sapphire Aluminium Industries
- Sandvik Mining and Construction
- Stylecraft Australia
- Suncorp Metway
- Techtronic Industries
- Telstra

---

**Combined Management Consultants**

PO Box 511 Manly NSW 1655

Ph + 61 2 9977 8338 | Fax: + 61 2 8456 5971

ABN 17 001 982 716 | [www.cmcaust.com](http://www.cmcaust.com)